

Ranch

Cottage

Cape Cod

Traditional

Vacation

Estate

The Logan



3 Bedrooms, 2.5 Baths
1,439 1st Floor, 638 2nd Floor,
2,077 Living Area
27'8" x 52' Dimensions



Enjoy both convenience and style in The Logan. It all starts with the uniquely designed living room that opens to a morning room and the formal dining room. The kitchen can be accessed from two sides and the master suite is secluded at the far end of the first level for added privacy. Two additional bedrooms and a full bath complete the second floor.

*Top elevation shown with optional 12/12 roof pitch, optional 4' hip roof dormers on roof, on-site constructed porch, sidelite at front door. Lower elevation shown with on-site constructed front porch.

HandCrafted Homes

101 Eastern Minerals Rd., Henderson, NC 27537 • 877-424-4321 • 252-436-0001 • HandCraftedHomes.com

Ranch

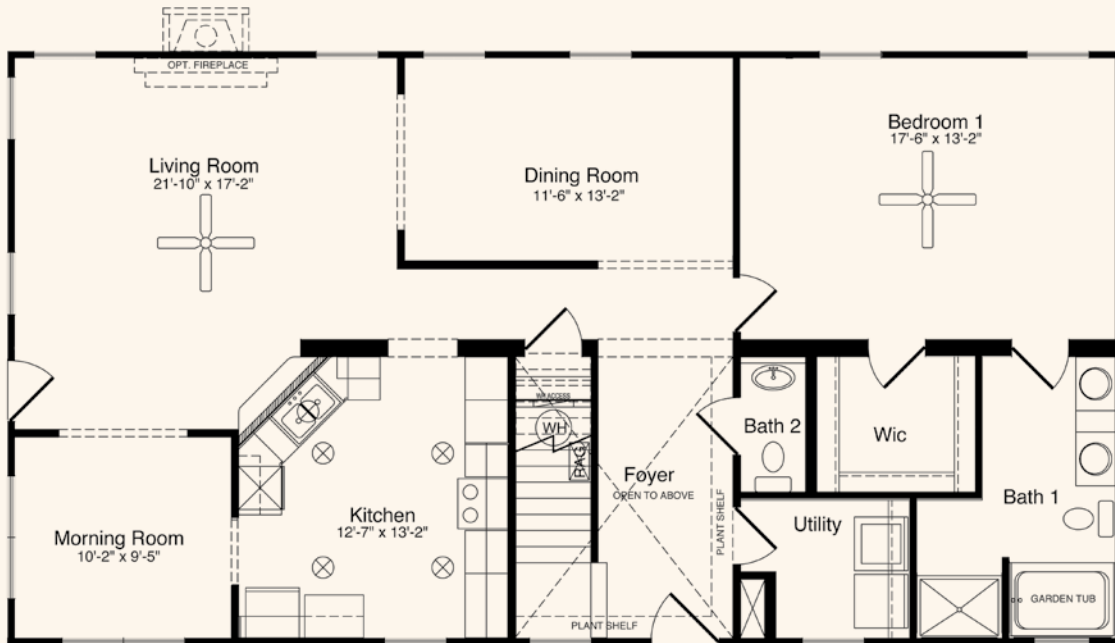
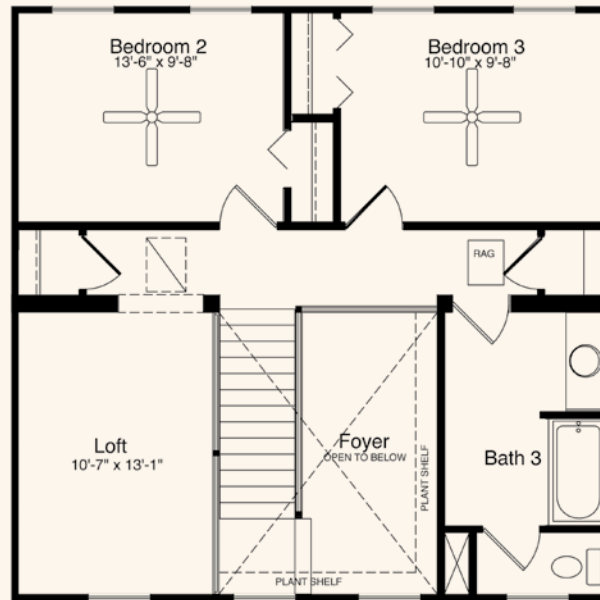
Cottage

Cape Cod

Traditional

Vacation

Estate



All home elevations are artist renderings and may vary from actual construction. All floor plans and room sizes are approximate. All information contained is the sole property of HandCrafted Homes.

The Logan

HandCrafted Homes

101 Eastern Minerals Rd., Henderson, NC 27537 • 877-424-4321 • 252-436-0001 • HandCraftedHomes.com